



Single Glazed



Double Glazed



Ranch Slider

Pet-corp International

# Glass Cat Door

Versatile Glass Fitting Cat Door

PC2



**Generous flap size** 185mm(7 1/4") x 205mm(8")  
-Suits all breeds of cats and some small dogs



**High impact 100% polycarbonate door**  
-UV stabilized and virtually unbreakable



**Fits all glazing applications**  
-Single, double glazed and ranch sliders



**4-way locking system**  
-In, Out, In/Out and Locked



**3** Year  
Warranty



**makrolon**  
High-tech plastic from Bayer  
and Bayer Lustran



Flap Width  
185mm (7 1/4")  
Flap Height  
205mm (8")  
Door Diameter  
295mm (11 5/8")



Glass  
Cutout Dimensions  
  
Hole Diameter  
267mm (10 1/2")

3 Year  
Warranty



Single Glazed



Double Glazed



Ranch Slider

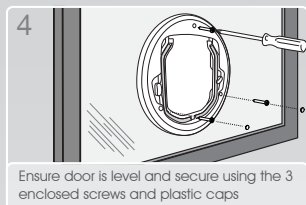
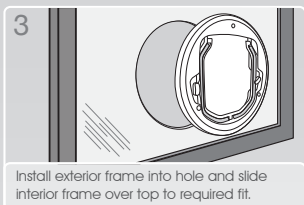
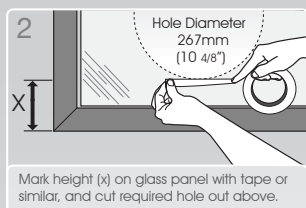
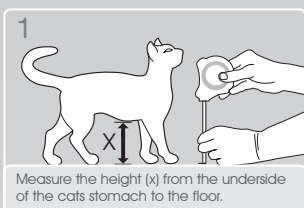
Pet-corp International



PC2

## Versatile Glass Fitting Cat Door

⚠ Installation only to be completed by professional glazier



- Designed for single pane, double glazing installations up to 30mm thick
- Can be installed in ranch sliders
- Fits cut out hole 245mm and 267mm (For new installations we suggest a cut out hole of 267mm to allow fitment of a magnetic door at a later date)
- Large flap 185mm (w) x 205mm (h)
- 4-way locking system
- Virtually unbreakable flap made of high impact Bayer Polycarbonate
- Stainless steel screws to prevent rust and staining
- Self-lining frame to prevent dirt entrapment
- Strong NdFeb magnet provides self-locating flap and holds flap closed against strong winds
- Silicone coated brush seal to prevent draughts
- 3 year warranty
- Available in clear and white

Code: PC2-C Versatile Cat - Clear

Code: PC2-W Versatile Cat - White



Ph: (09)4156338 Fax: (09)4156339  
email: sales@glasscorp.co.nz web: www.glasscorp.co.nz